

Name **Cù Lao Chàm – Hội An**
An
Country **Viet Nam**

Date of registration:
23/11/2020

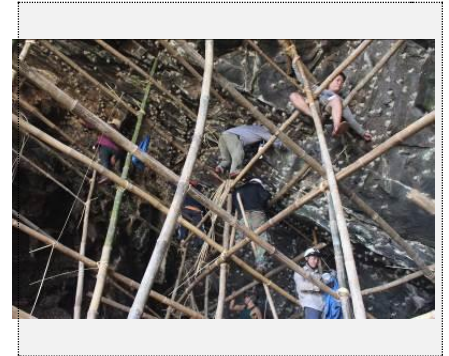
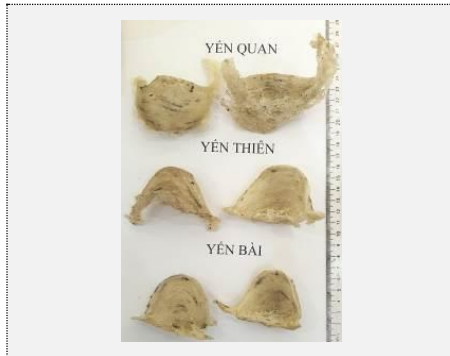


Photo source: ipvietnam.gov.vn

Main characteristics/features

Geographical area

Cù Lao Chàm – Hội An bird nest has lotus shape, a distinctive smell with no strange smell, and a slightly salty and fatty taste. They are categorized into three types: “Quan” (the nest root and body is intact; opaque white colour; visible impurity is under 5%; nest thickness 3.0 ± 0.3 mm; weight over 10.5 gram per nest), “Thiên” (the nest root and body is intact; white and slightly opaque colour; visible impurity is under 5%; nest thickness 2.5 ± 0.2 mm; weight 8.5 – 10.5 gram per nest) and “Bài” (nest body is intact; visible impurity is under 10%; nest thickness 2.0 ± 0.3 mm; weight 6.5 – 8.5 gram per nest). Furthermore, Cù Lao Chàm – Hội An bird nest has peculiar characteristics in Protein content (50.07 ± 1.29 %), lipid (1.72 ± 0.11 %), NaCl (1.97 ± 0.14 %), Magnesium ($1.457.4 \pm 50.9$ mg/kg), Calcium ($6.918.8 \pm 315.1$ mg/kg) and Zinc (2.47 ± 0.41 mg/kg).

Lao island, Khô Mệ island, Khô Con island, Lả island, Dài island, Mồ island, and Tai island of Tân Hiệp commune, Hội An city, Quảng Nam province.

Production/processing

Link between product and territory

The harvests are conducted in two terms, from mid April to early May, and from mid August to early September. It is done in 4 – 5 consecutive days. The processing is conducted after the harvest season. It is done by carefully removing impurities on the nest without cracking, breaking the nest or the root. After processing, purity check and weighing, the nests are sorted by organoleptic characteristics. Processed and sorted products are moved to cold storage and remove moisture until it is 7 – 10%.

The humidity and pleasant temperature are favourable conditions for swiftlets to thrive and make nests. The absence of cold winters provides an ideal environment for the birds and prevent migration. Moreover, the geographical area has a diverse ecosystem. The biodiversity creates an abundant and diverse food source for the swiftlets.

Publication in the Official Gazette Decision no. 4522/QĐ-SHTT
Competent authority People’s Committee of Hội An city
GI rights holder/GI association
Contact information People’s Committee of Hội An city
9 Trần Hưng Đạo street, Sơn Phong ward, Hội An city, Quảng Nam province
Tel: (+84) 235 3861 206
Fax: (+84) 235 3862 575
Email: ubndha@dng.vnn.vn

Type of product Bird nest
Control body People’s Committee of Hội An city
File number 00091
Websites